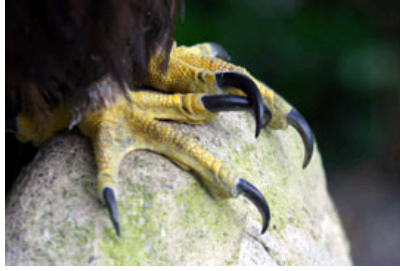


Adaptation workshop

also available as an outreach workshop



Identifying the features of birds of prey that make them well adapted for catching their food and living in different habitats.

Considering some issues facing birds of prey and some conservation measures used to help them.

Curriculum links

Science KS2, KS3 & KS4: Investigative skills, Life processes,

Humans and other animals, Variation and classification, Living things in their environment.

Geography KS2, KS3 & KS4: Knowledge and understanding of places, Environmental change and sustainable development.

PSHE and Citizenship KS2, KS3 & KS4: Preparing to play an active role as citizens, Knowledge and understanding about becoming informed citizens.

Contact details

For further information about the centre, its school visits programme and the Trust's after-school wildlife club for 8 to 12-year-olds — the Kestrel Club — contact:

The Hawk and Owl Trust Education Centre

Sculthorpe Moor Community Nature Reserve

Turf Moor Rd, Sculthorpe, Fakenham, Norfolk NR21 9GN

Tel: 01328 856788

To email [click here](#)

Related item



- [School Visits leaflet \(160kb\)](#)

[Download Sculthorpe Moor School Visits leaflet pdf](#)